

SITE INFORMATION

Real Property Description: Lot 13 RP18886

Local Authority: Brisbane City Council  
Site Classification: Low Impact Industry

Site Area: 415 m<sup>2</sup>  
Building Area: 521.6 m<sup>2</sup>

DEVELOPMENT INFO

<b>GFA</b>	
<b>Licensed Bar Area (Hotel)</b>	
Kitchen	12.2 m <sup>2</sup>
Bar Space	22 m <sup>2</sup>
Function Space	82m <sup>2</sup>
Amenities	22.8 m <sup>2</sup>
Storage	30.4 m <sup>2</sup>
<b>TOTAL</b>	<b>169.4 m<sup>2</sup></b>
<i>External Dining</i>	<i>TOTAL 37m<sup>2</sup></i>

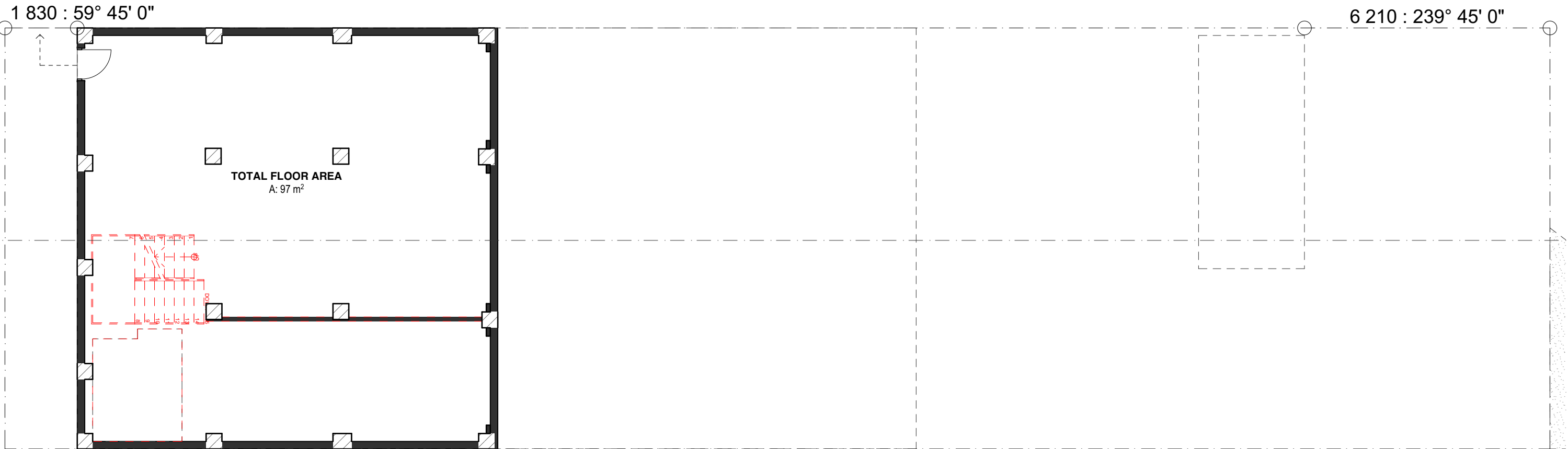
<b>Distilling Operations (Service Industry)</b>	
Distillery	13.5 m <sup>2</sup>
Bonded Storage	135.6 m <sup>2</sup>
<b>Ancillary to Distillery:</b>	
<b>Office (Office)</b>	
Existing Office Space	133.2 m <sup>2</sup>
Existing Amenities	7 m <sup>2</sup>
<b>TOTAL</b>	<b>289.3 m<sup>2</sup></b>
<b>TOTAL</b>	<b>458.7 m<sup>2</sup></b>

Site Area	415 m <sup>2</sup>
Existing Impervious Area	396.8 m <sup>2</sup>
Proposed Impervious Area	396.8 m <sup>2</sup>

Received  
13/11/2019  
BCC DS



www.elevationarchitecture.com.au • info@elevationarchitecture.com.au  
p 07 3251 6900 f 07 3852 2082



Elevation Architecture Pty Ltd ACN 606 170 807 © Copyright reserved this document is and shall remain the property of Elevation Architecture. Unauthorised use of this document in any form whatsoever is prohibited.

P:\Data 1\1074-01 Finchley Street Whisky Distillery\5.1 Sketch Design\5.1.2 ArchiCAD\1074-01 SD Master\_21.pln

Finchley Street Whisky Distillery  
25 Finchley Street Milton 4064  
Mike Lee

## Demolition Basement Floor Plan

scale: **1:100@A3**

date: --/--/--



Received

13/11/2019

BCC DS

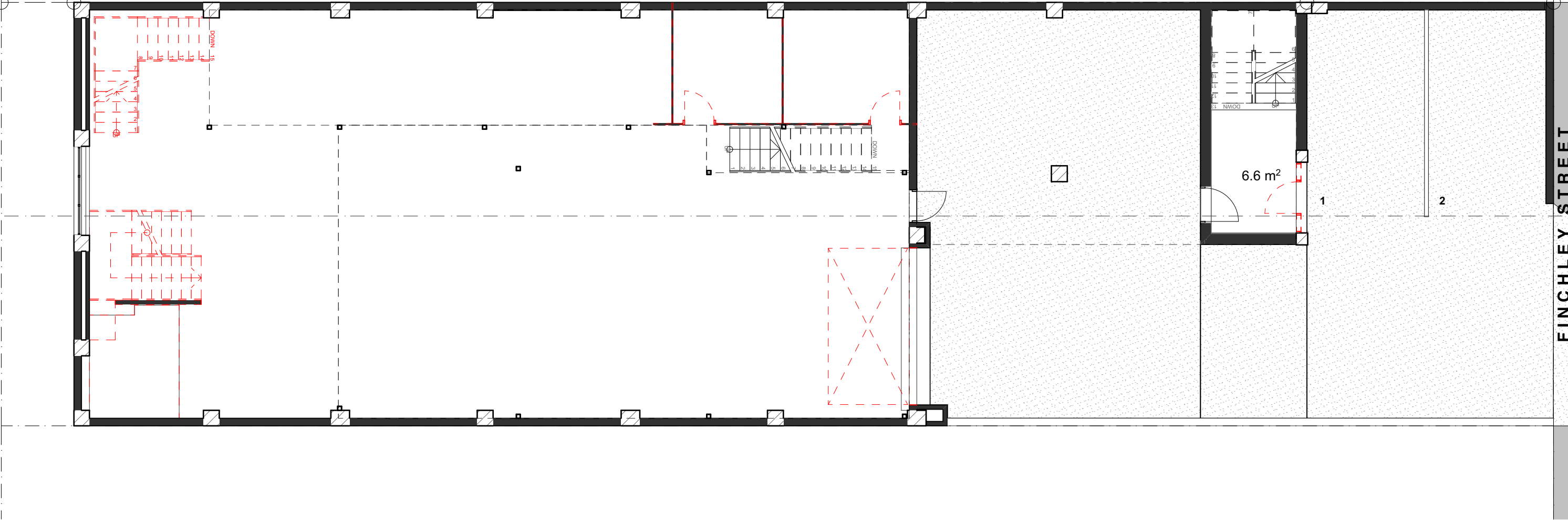
**A-SD-03.01- B**

1074-01

07/11/19

1 830 : 59° 45' 0"

6 210 : 239° 45' 0"

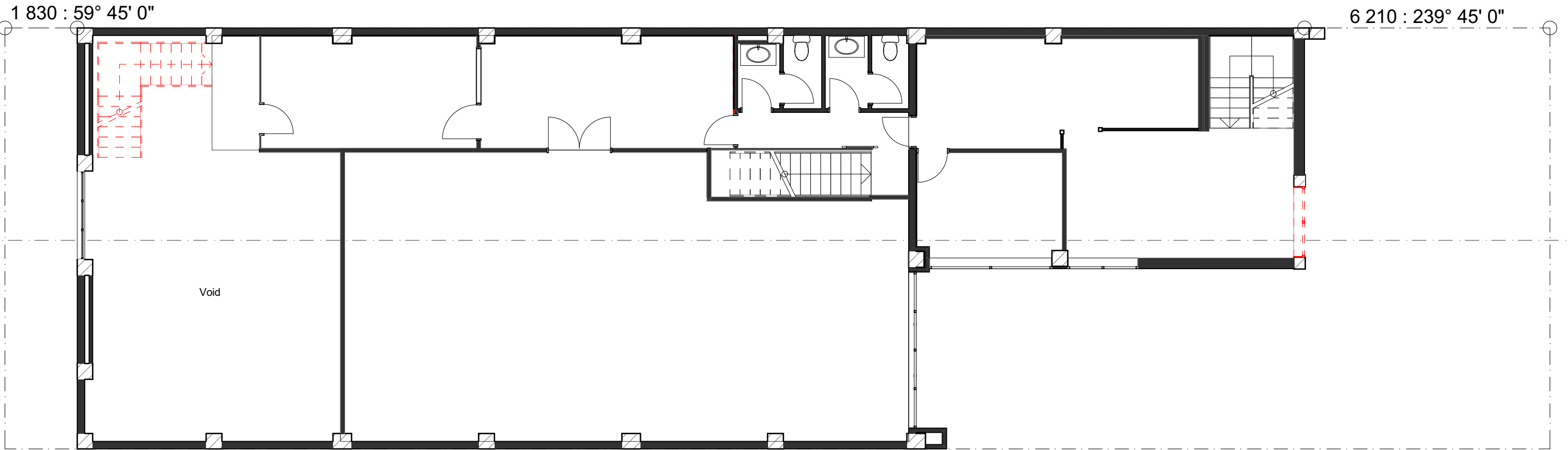


FINCHLEY STREET



Received  
13/11/2019  
BCC DS

**A-SD-03.02- D**  
1074-01 07/11/19



Received

13/11/2019

BCC DS

**A-SD-03.03- D**

1074-01

07/11/19

p 0 7 3 2 5 1 6 9 0 0 □ f 0 7 3 8 5 2 2 0 8 2 • w w w . e l e v a t i o n a r c h i t e c t u r e . c o m . a u • i n f o @ e l e v a t i o n a r c h i t e c t u r e . c o m . a u

DEVELOPMENT INFO

GFA	
Licensed Bar Area (Hotel)	
Kitchen	12.2 m <sup>2</sup>
Bar Space	22 m <sup>2</sup>
Function Space	82m <sup>2</sup>
Amenities	22.8 m <sup>2</sup>
Storage	30.4 m <sup>2</sup>
TOTAL	169.4 m <sup>2</sup>
External Dining	TOTAL 37m <sup>2</sup>
Distilling Operations (Service Industry)	
Distillery	13.5 m <sup>2</sup>
Bonded Storage	135.6 m <sup>2</sup>
Ancillary to Distillery:	
Office (Office)	
Existing Office Space	133.2 m <sup>2</sup>
Existing Amenities	7 m <sup>2</sup>
TOTAL	289.3 m <sup>2</sup>



Received  
13/11/2019  
BCC DS



Finchley Street Whisky Distillery  
25 Finchley Street Milton 4064  
Mike Lee

Proposed Basement Floor Plan  
scale: 1:100@A3  
date:



A-SD-03.04- D  
1074-01 07/11/19

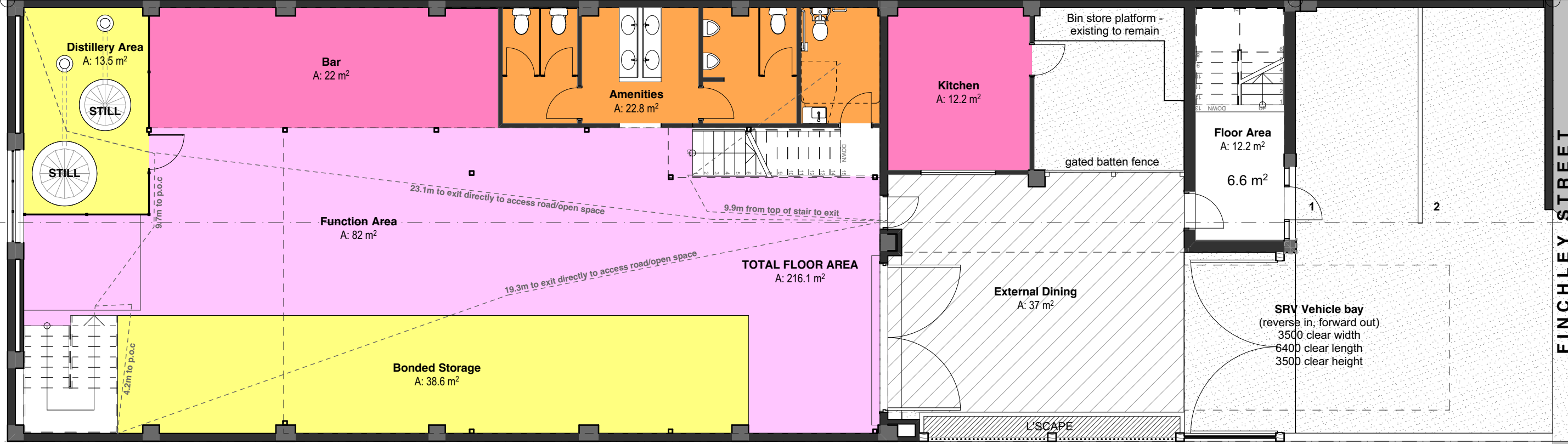
p 0 7 3 2 5 1 6 9 0 0 □ f 0 7 3 8 5 2 2 0 8 2 • w w w . e l e v a t i o n a r c h i t e c t u r e . c o m . a u • i n f o @ e l e v a t i o n a r c h i t e c t u r e . c o m . a u

DEVELOPMENT INFO

<b>GFA</b>		
<b>Licensed Bar Area (Hotel)</b>		
Kitchen		12.2 m <sup>2</sup>
Bar Space		22 m <sup>2</sup>
Function Space		82m <sup>2</sup>
Amenities		22.8 m <sup>2</sup>
Storage		30.4 m <sup>2</sup>
	<b>TOTAL</b>	<b>169.4 m<sup>2</sup></b>
<i>External Dining</i>	<b>TOTAL</b>	<b>37m<sup>2</sup></b>
<b>Distilling Operations (Service Industry)</b>		
Distillery		13.5 m <sup>2</sup>
Bonded Storage		135.6 m <sup>2</sup>
<b>Ancillary to Distillery:</b>		
<b>Office (Office)</b>		
Existing Office Space		133.2 m <sup>2</sup>
Existing Amenities		7 m <sup>2</sup>
	<b>TOTAL</b>	<b>289.3 m<sup>2</sup></b>

1 830 : 59° 45' 0"

6 210 : 239° 45' 0"

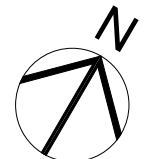


Received  
13/11/2019  
BCC DS



Finchley Street Whisky Distillery  
25 Finchley Street Milton 4064  
Mike Lee

**Proposed Ground Floor Plan**  
scale: 1:100@A3  
date:

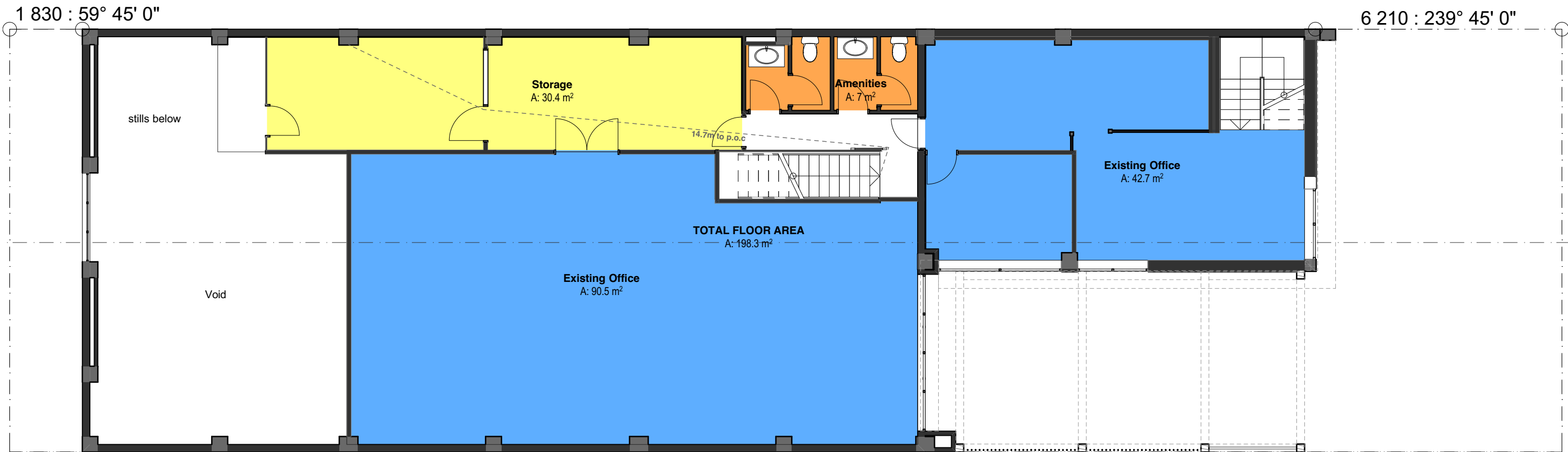


**A-SD-03.05-** **E**  
1074-01 07/11/19

p 0 7 3 2 5 1 6 9 0 0 □ f 0 7 3 8 5 2 2 0 8 2 • www.elevationarchitecture.com.au • info@elevationarchitecture.com.au

DEVELOPMENT INFO

<b>GFA</b>	
<b>Licensed Bar Area (Hotel)</b>	
Kitchen	12.2 m <sup>2</sup>
Bar Space	22 m <sup>2</sup>
Function Space	82m <sup>2</sup>
Amenities	22.8 m <sup>2</sup>
Storage	30.4 m <sup>2</sup>
<b>TOTAL</b>	<b>169.4 m<sup>2</sup></b>
<i>External Dining</i>	
<b>TOTAL</b>	<b>37m<sup>2</sup></b>
<b>Distilling Operations (Service Industry)</b>	
Distillery	13.5 m <sup>2</sup>
Bonded Storage	135.6 m <sup>2</sup>
<b>Ancillary to Distillery:</b>	
<b>Office (Office)</b>	
Existing Office Space	133.2 m <sup>2</sup>
Existing Amenities	7 m <sup>2</sup>
<b>TOTAL</b>	<b>289.3 m<sup>2</sup></b>
<b>TOTAL</b>	<b>458.7 m<sup>2</sup></b>



Received  
13/11/2019  
BCC DS



Elevation Architecture Pty Ltd ACN 606 170 807 © Copyright reserved this document is and shall remain the property of Elevation Architecture. Unauthorised use of this document in any form whatsoever is prohibited.

P:\Data 1\1074-01 Finchley Street Whisky Distillery\5.1 Sketch Design\5.1.2 ArchiCAD\1074-01 SD Master\_21.pln

Finchley Street Whisky Distillery  
25 Finchley Street Milton 4064  
Mike Lee

Proposed First Floor Plan  
scale: 1:100@A3  
date:



A-SD-03.06- F  
1074-01 07/11/19



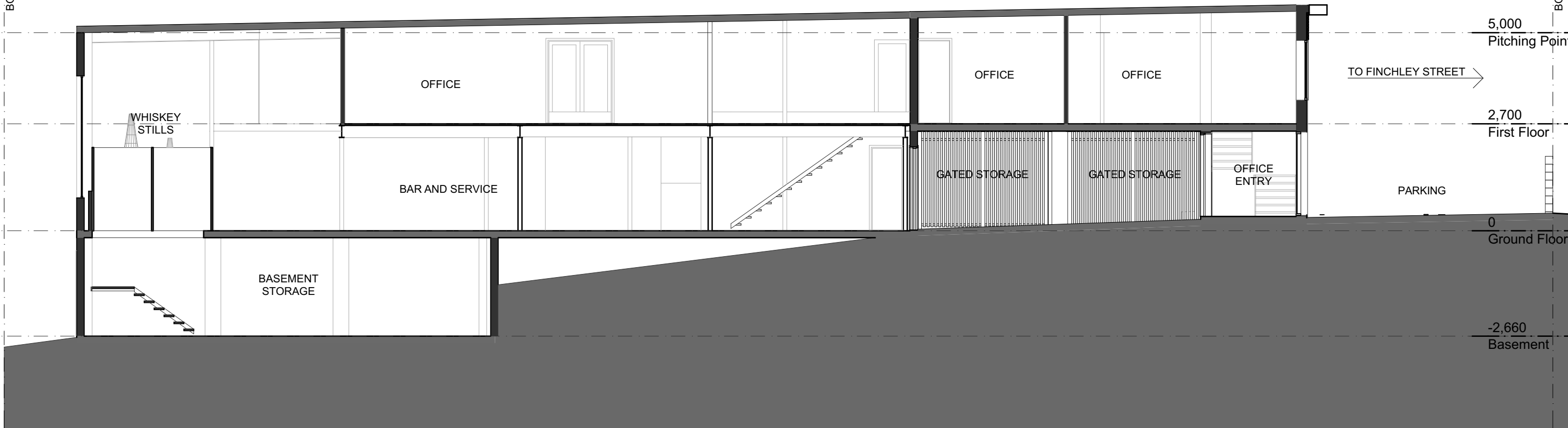
1 Street Elevation  
SCALE 1:100 @ A3

Received

13/11/2019

BCC DS





# 1 Section 1



2 Streetscape View



1 Gated Courtyard

Received  
13/11/2019  
BCC DS